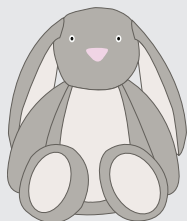


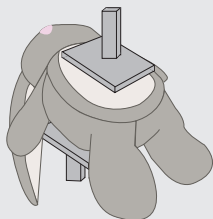


HOW TO DECORATE YOUR PRINTME by Mumbles ANIMALS



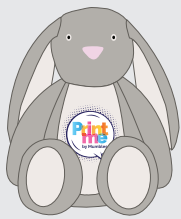
STEP 1

CHOOSE YOUR PRINTME ANIMAL FROM
THE COLLECTION



STEP 2

VINYL OR SUBLIMATE ME
PLATE ME UP



STEP 3

ENJOY

SUBLIMATE ME

1. **SUBLIMATION PRINTING** works on all of the MM060 PRINTME styles.
2. Once the design has been printed, tear around the edges of the sublimation paper to avoid impressions being made on the fur.
3. Place protection paper on top of the design to protect the fur. In addition, place a piece of suitable fabric over the animal to avoid the pile flattening.
4. Heat the press to 185°C and press for 60 seconds, if you are using additional fabric to protect the pile, press for 90 seconds as the fabric will absorb the heat.
5. Remove the protection and peel off the sublimation paper to reveal the design.

VINYL PRINT ME

1. **VINYL PRINTING** works on all of the MM060 PRINTME styles, a vinyl with a thicker adhesive e.g a flock or glitter has the best results.
2. Place protection paper on top of the design to protect the fur. In addition, place a piece of suitable fabric over the animal to avoid the pile flattening.
3. Heat the press to 185°C and press for 15 seconds, if you are using additional fabric to protect the pile, press for 30 seconds as the fabric will absorb the heat.
4. Peel off the vinyl backing and return the protection paper before re-pressing for a further 15 seconds to seal the design.

*Above are suggested methods of decorating, requirements may vary depending on the model and type of equipment you are using.



HOW TO DECORATE YOUR ZIPPIE by Mumbles ANIMALS

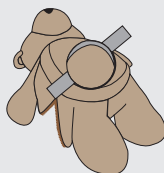


STEP 1
CHOOSE YOUR ZIPPIE ANIMAL FROM
THE COLLECTION

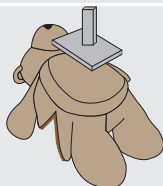


STEP 2
UNZIP AND REMOVE THE STUFFING
FROM YOUR ZIPPIE

STEP 3



EMBROIDER ME
FRAME ME UP



SUBLIMATE OR VINYL PRINT ME
PLATE ME UP



STEP 4
RETURN THE INNER STUFFING AND
ZIP ME BACK UP



STEP 5
ENJOY

EMBROIDER ME

1. **EMBROIDERY** works on all Zippies with a professional finish.
2. Frame size 15-18cm will fit most of our Zippies. Square or circular will suit.
3. Use a sheet of backing underneath the animal to stabilise the fur.
4. Use a sheet of aquafilm on top of the animal to let your stitches stay proud and not sink into the fur.
5. Make sure your Zippie is positioned straight, a laser needle will help. Alternatively, mark up a piece of a tape with a + to line up and remove before sewing.

PRINT ME

1. **SUBLIMATION PRINTING** works on all Zippies with a light coloured tummy.
 2. Place protection paper on top of the design to protect the fur. In addition, place a piece of suitable fabric over the animal to avoid the pile flattening.
 3. Heat the press to 185°C and press for 60 seconds, if you are using additional fabric to protect the pile, press for 90 seconds as the fabric will absorb the heat.
-
1. **VINYL PRINTING** works on all Zippies, a vinyl with a thicker adhesive e.g a flock or glitter has the best results.
 2. Place protection paper on top of the design to protect the fur. In addition, place a piece of suitable fabric over the animal to avoid the pile flattening.
 3. Heat the press to 185°C and press for 15 seconds, if you are using additional fabric to protect the pile, press for 30 seconds as the fabric will absorb the heat.

*Above are suggested methods of decorating, requirements may vary depending on the model and type of equipment you are using.